

PART S.W. 1/4 SEC. 11, T.5N., R.2W., S.L.B. & M.  
RIDGEWOOD ESTATES SUBDIVISION NO.4

IN ROY CITY  
SCALE 1" = 40'

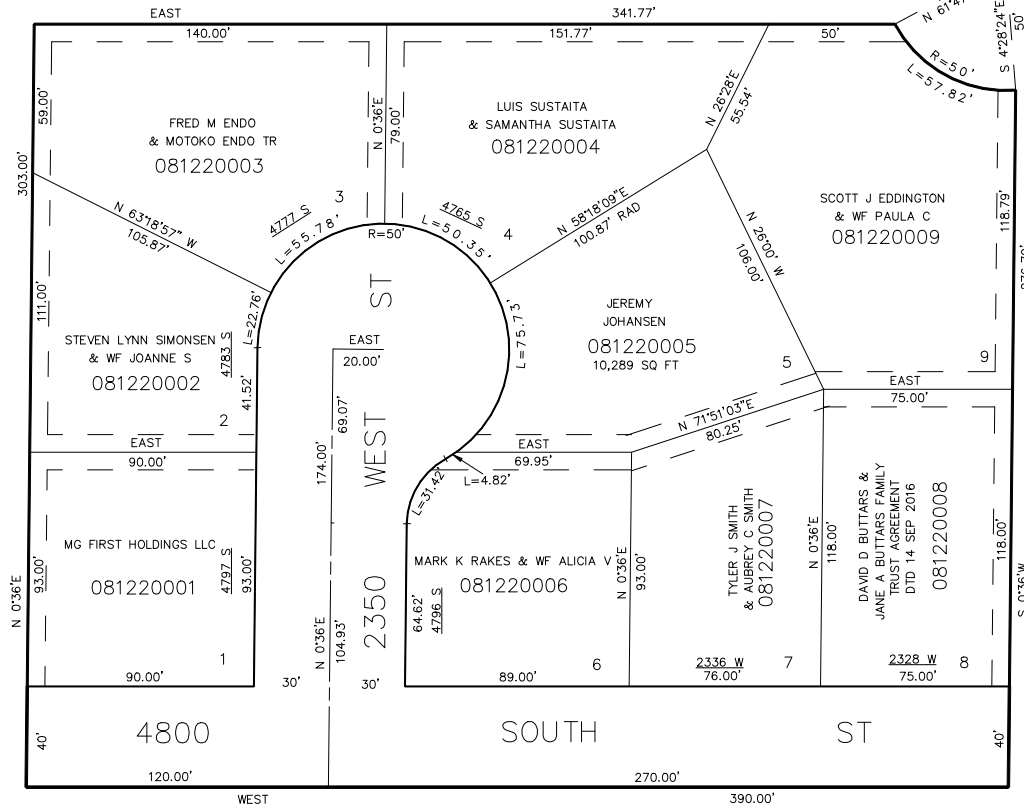
TAXING UNIT: 41

SEE PAGE 61

2325 WEST ST

SEE PAGE 58

SEE PAGE 61



SEE BOOK 9 PAGE 1

7' UTILITY & DRAINAGE EASEMENTS  
EACH SIDE OF PROPERTY LINES AS  
INDICATED BY DASHED LINES.  
EXCEPT AS OTHERWISE SHOWN.

FOR COMPLETE ENG. DATA  
SEE ORIG. DED. PLAT IN  
BOOK 17 PAGE 11.

\*FOR TAX PURPOSES ONLY\*